

CRASH BARRIERS

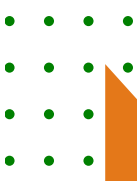
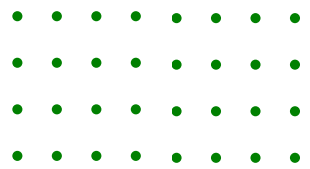
ENVIROTECH SYSTEMS LIMITED

Complete **Noise** Solution



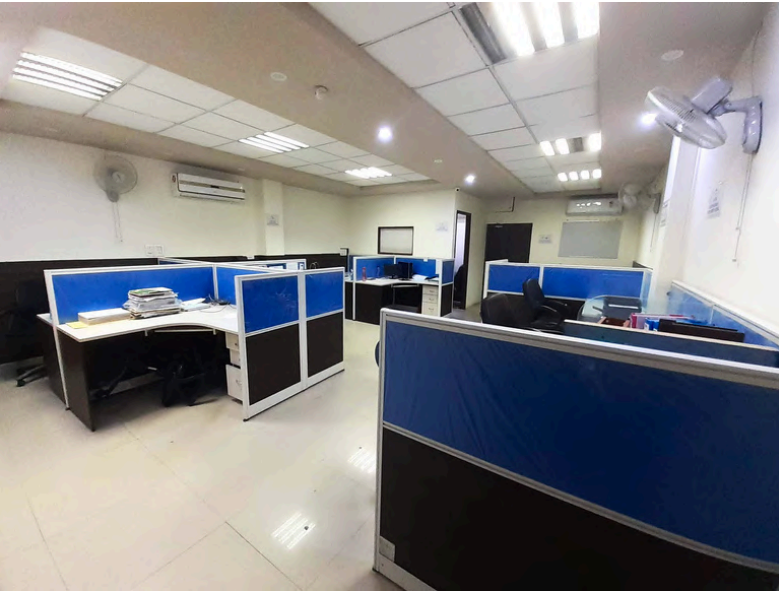
More info:
+91 92894 66640
www.EnvirotechBarrier.com

An ISO 9001, 14001 & 45001
CERTIFIED COMPANY



About ENVIROTECH SYSTEMS

ENVIROTECH SYSTEMS LIMITED is one of the most renowned company for its acoustic solutions. We lead the market with our large range of products and solutions that can cater to almost every acoustic need. Our capability to provide noise control solutions is spread over a number of domains. In our endeavour to reach every nook and corner, it has led us to grow in all directions. We strive to deliver the perfect solution that meets the exact requirement of our client.



VENTURES

CERTIFICATES



GRIHA



ISO 9001:2015



ISO 14001:2015



ISO 45001:2018

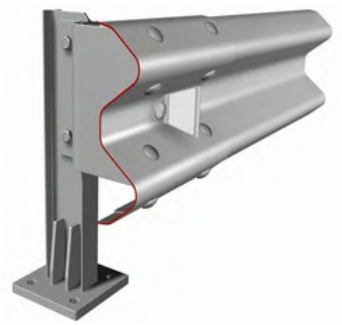
1. **SAFETY BARRIER W BEAM BARRIER**
Page No. 04
2. **THRIE BEAM CRASH BARRIER**
Page No. 05
3. **POLYCARBONATE NOISE BARRIER**
Page No. 06
4. **METALLIC NOISE BARRIER**
Page No. 06
5. **ECHO BARRIER**
Page No. 06
6. **TEST CERTIFICATES**
Page No. 07
7. **PROJECT IMAGES**
Page No. 08
8. **CLIENT LIST**
Page No. 09
9. **CONTACT US**
Page No. 10



Envirotech Systems, a leading W Beam crash barrier manufacturer, produces a comprehensive range of crash barriers and components that conform to Indian, American, European, and other international standards. Our commitment to quality is evident as we source the finest raw materials from trusted brands like SAIL, TATA, and Hindustan Zinc. With a State of art manufacturing facilities, our offerings include. W-Beam Single Side Single Barrier, Double Side Single Barrier, Single Side Double Barrier and Double Side Double Barrier configurations. Our crash barriers undergo thorough testing by European standards.

Feature of the Product

- Raw materials are sourced from trusted brands like SAIL, TATA, and Hindustan Zinc
- Our W-Beam crash barriers range from single side single barrier, double side single barrier, single side double barrier, double side double barrier.
- Our W-Beam crash barriers are cold rolled in 2.8mm thickness.
- Raw materials conform to IS 5986/2062/10748 or equivalent standards.
- Raw material grades include Fe360/Fe410/Fe510.
- Post and spacer dimensions are 150755mm (underneath width).



Application Area of W Beam Crash Barriers

Envirotech Systems limited W Beam crash barriers stand as a formidable safeguarding solution across diverse application areas, including highways, expressways, bridges, and various road networks. With precision engineering and compliance with international standards, our W Beam crash barriers ensure optimal safety and protection. These barriers serve as a reliable defense against vehicular impact, contributing to enhanced road safety. Envirotech Systems W Beam crash barriers are indispensable for both urban and rural infrastructure projects, making them a vital component of roadside barriers and highway-side barriers. Explore the versatility and effectiveness of our W Beam crash barriers in safeguarding lives and infrastructure.

(GRIHA V.2019 criterion:11)



A Thrie beam crash barrier has three waves. Compared to two-wave-shaped products, a three-beam crash barrier has a more durable construction and higher impact endurance.

Now let's have a quick look at some of the typical specifications of a Thrie Beam Crash Barrier

- The Thrie Beam Crash Barrier comprises a steel post and a 3mm thick rail element.
- The steel post and the spacer are 75mm x 150mm and 5mm thick.
- The rail sits at 85cm off the ground and is driven into the ground to a length of 1150 mm.
- The design conforms to the Indian (MORTH - Ministry of Road Transport and Highways), American (AASHTO M180), Euronorm (EN 1317 - 1&2), Indian Road Congress (IRC) specifications.
- Manufactured using the Cold Roll Forming Technology with multiple roll forming stations ensuring greater strength due to grain reorientation as compared to the normal press-formed sections.
- Raw Material used is ST - 42/IS 5986 FE 410/510-grade steel sourced from leading trusted brands like SAIL, TATA, and Hindustan Zinc.
- All the steel components and fasteners are galvanized by the hot-dip process of high-grade zinc coating (550 GSM minimum).

(GRIHA V.2019 criterion:II)

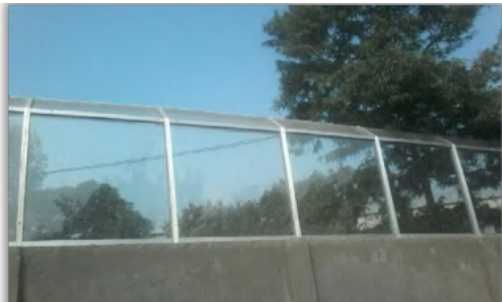


Polycarbonate Noise Barrier

The standard Polycarbonate Noise Barriers designed to achieve 22 STC to 36 STC rating and the same has been confirmed during laboratory test.

Technical Specifications:

- **Flexibility:** The polycarbonate / acrylic sheets are versatile.
- **Light transmission:** The translucent materials provide good light transmission of up to 90%.
- **Noise reduction:** The acrylic / polycarbonate noise barrier are the most effective at sound reduction and can reduce sound up to 36 dB(A).
- **Fire resistant:** It has a Class B fire rating.
GRIHA V.2019 criterion:11,



Metallic Noise Barrier

Metallic noise barriers which comprise the great majority of noise barriers are generally located at the edge of the road to reflect traffic noise. The height of these barriers is usually greater than other types. Often traffic noise levels increase for the vehicle occupant.

Technical Specifications:

- Weather proof
- Non-corrosive
- Strong & durable
- Soundproofing
- Fire retardant
- Noise Absorbing

GRIHA V.2019 criterion:11



ECHO Barrier

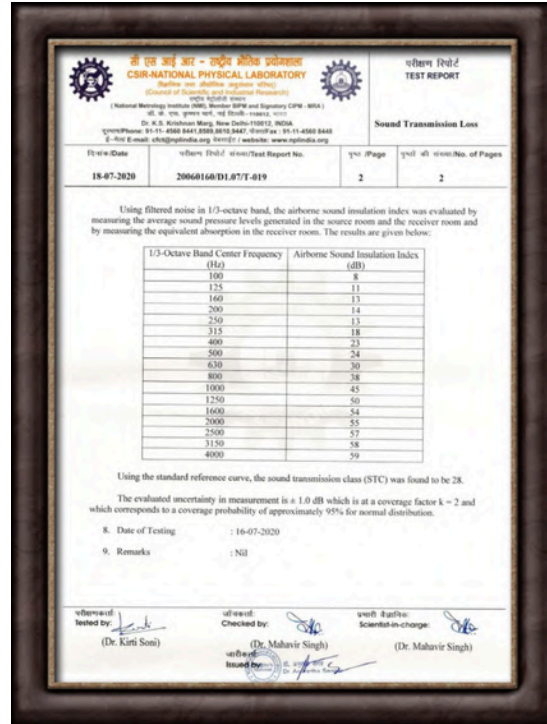
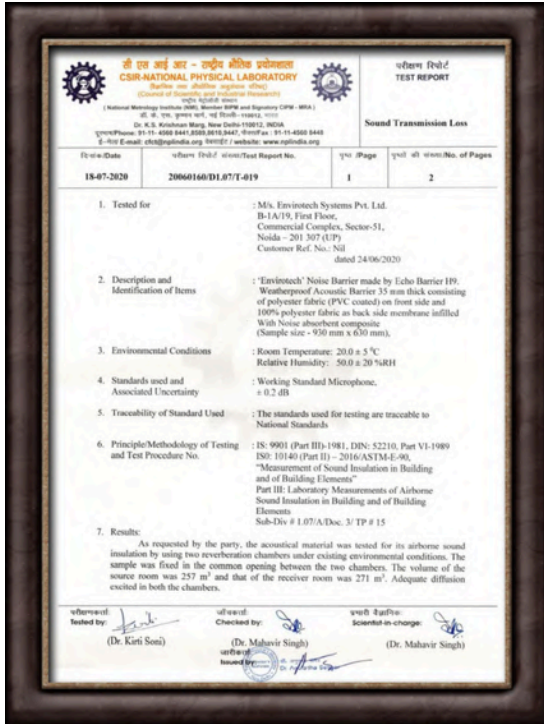
ENVIROTECH SYSTEMS Introducing Quality product from ECHO BARRIER. The Echo Barrier is a very light weight (2.2 kg/m²) portable acoustic barrier that offers excellent noise reduction and absorption. Echo Barrier's patented Acoustic technology, offers noise reduction between 15 to 32 dB in field conditions.

GRIHA V.2019 criterion:11

Application:

- Construction site Noise Barrier
- Road Noise Barrier
- Railway Noise Barrier





Temporary Noise Barrier



Metallic Noise Barrier



Some of Our Valued Client



Talk to us

 +91 92894 66640

 sales@EnvirotechLtd.com

 www.EnvirotechBarrier.com

Landline :

+91-120-4337633, 4337439

Phone:

+91- 9311011131, 9811011131

Mail:

sales@EnvirotechLtd.com



ENVIROTECH SYSTEMS LIMITED

Visit Our Websites

www.envirotechltd.com
www.envirotechacoustics.com
www.envirotechbarrier.com
www.envirotechpartitions.com
www.envirotechdoors.com
www.envirotechonline.in

Works:

B-1A/19, Commercial Complex, Sector 51, Noida – 201307, Uttar Pradesh, India

Factory:

Plot No-345-346-347, Ecotech-1 (Extension), Greater Noida-201308, Uttar Pradesh, India



VENTURES

CERTIFICATES



GRIHA



ISO 9001:2015



ISO 14001:2015



ISO 45001:2018